


Moving Beyond the Shelter Model: A Mobile Full Family Approach to Supporting Survivors

October 25, 2017

Session Objectives

- Overview of WTLC’s survivor driven advocacy approach beyond the shelter setting for survivors of Domestic Violence and Human Trafficking
- Overview of the program development process
- Discuss the challenges and benefits of supporting non-shelter survivors and their families



October 25, 2017

MISSION AND VISION [3]



Mission: Help individuals and families escape the depths of domestic violence and exploitation.

Vision: End the cycle of violence and exploitation.


Survivor-Driven Advocacy



October 25, 2017

WTLC Model

1. Survivor Driven/Trauma Informed Services
2. Reach survivors/victims and their families
 - Services in Shelter/Housing
 - Services in Community Based Center(s), FRC’s, Justice Center, etc.
 - Services in home and community
3. Full Family Approach
 - Batterer Engagement
 - Multi-generational supports
 - Ecological Perspective =survivor supports
4. Culturally appropriate/sensitive services
 - Multiple languages, respect, responsiveness
 - Partnerships to ensure access
 - SAFE Zone
 - PETS in Shelter



October 25, 2017

We are:

- A**ttentive to other’s need
- D**edicated to provide quality services
- V**alidating each survivor’s needs
- O**pen to new ideas and ways
- C**ompassionate in survivor-driven care
- A**uthentic in all we do
- T**rustworthy and respectful to everyone
- E**ngaged and use various communication
- S**triving for access

- W**elcoming
I believe a welcoming place is an inviting place. I greet everyone I encounter with a courteous smile.
- T**rauma informed and survivor-driven
I believe survivors’ priorities are my priorities. I respond with a listening ear and guidance.
- L**eaders
I believe new ideas could lead us to end the cycle of violence. I am searching for different approaches and best practices.
- C**reative
I believe obstacles are unmet opportunities. I am able to create solutions and problem solve.



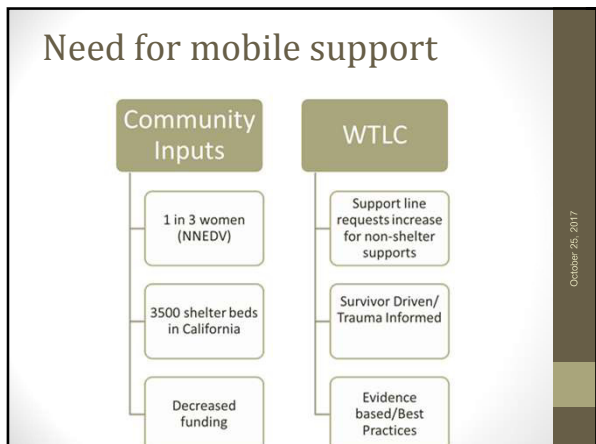
October 25, 2017

Our Services

Housing Continuum	Support Services
Emergency (shelter & safety net) Bridge Transitional RRH Perm Housing Alternative housing options	24/hour support line Health and Mental Health Addiction Case Planning/ Goal Setting
Legal Advocacy	Prevention
Engage survivors in legal process Restraining orders Family Law support	Education/Trainings Awareness Partnerships



October 25, 2017



MOBILE SAFETY

Assessment of environmental factors	Assessment of participant's living space
<ul style="list-style-type: none"> - Do you have the complete and exact address of the visit? - Is the place of visit in a well-lit area? - Are there other factors that may pose a risk for danger (weather, disaster, protests, etc.)? 	<ul style="list-style-type: none"> - Who is likely to be in the participant's home during the visit? <ul style="list-style-type: none"> o Children o Parents o Other relatives/friends o Pets including guard dogs - Does accessing the space require the use of flight of stairs? - Is the family known to have weapons in the home?
Assessment of participant's condition	Assessment of Advocate's appearance & condition
<ul style="list-style-type: none"> - Does the participant have an active substance abuse problem? - Does the participant have a mental health illness or violence behavior? 	<ul style="list-style-type: none"> - Are you working alone? - Are you wearing accessories that have symbols (such as political or religious) that may trigger aggression? - Is your phone fully charged? - Is your vehicle in good working condition? - Do you have your supervisor's and emergency contact's phone number on you?

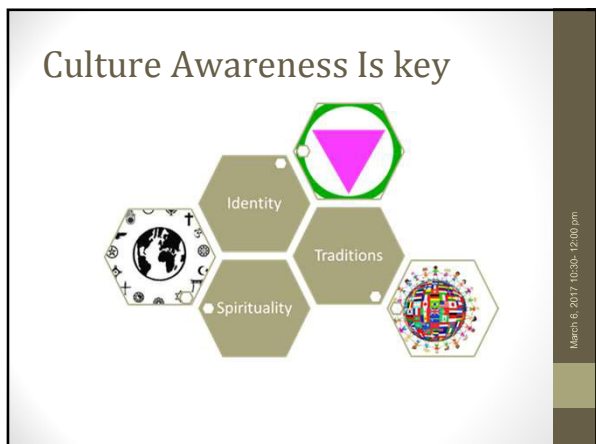
October 25, 2017

Need for Co-Homeless/DV Services

- Victims of domestic violence lost about 8 million days of paid work because of the violence that they experienced.
- Considering the cost and prevalence, as well as the direct relationship between housing and domestic violence, a majority of homeless women are victims of domestic violence.
- 28% of families were homeless because of domestic violence in 2008 (U.S. Conference of Mayors, 2008).
- 39% of cities cited domestic violence as the primary cause of family homelessness (U.S. Conference of Mayors, 2007).

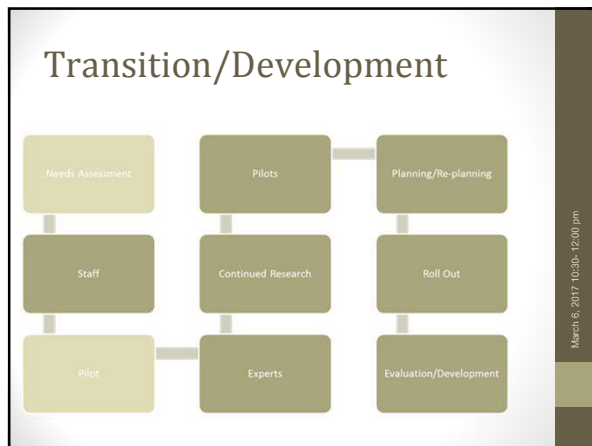
<http://www.nationalhomeless.org/factsheets/domestic.html>

October 25, 2017



Homeless - DV Collaboration

<p>Best Practice</p> <ul style="list-style-type: none"> •Cross Training •Trauma Informed Services •Coordination of Services 	<p>Challenges</p> <ul style="list-style-type: none"> •Housing Guidelines •Limited Housing •Serving full family
---	--



Discussion:

- How do you or your organization view the survivor in his/her decision making?
- In our communities, how do we support the full family in an effort to decrease homelessness?
- What is the reason for closed services for domestic violence? How can an open conversation on this open to integrate into other services within homeless services?
- Collaboration?



Resources

- <http://www.nationalhomeless.org/factsheets/domestic.html>
- <https://endhomelessness.org/homelessness-in-america/what-causes-homelessness/domestic-violence/>
- <https://wscadv.org/projects/domestic-violence-housing-first/toolkit/>
- <https://wscadv.org/wp-content/uploads/2015/05/DVHF-Program-Assessment-Tool.pdf>
- <https://cap.vaw.msu.edu/examining-the-impact-of-mobile-advocacy-and-flexible-funding-on-domestic-violence-survivors-housing-stability-and-well-being/>
- https://www.domesticshelters.org/domestic-violence-articles-information/we-ll-come-to-you#.WLNfm_vuUk

Gigi Tsontos, LCSW MPA
 Chief Executive Officer WTLC
gtsontos@wtlc.org
 714-992-1939x 106
www.wtlc.org
 24 hour HOTLINE: 877-531-5522

March 8, 2017 10:30-12:00 pm